

Quiz \rightarrow M, 5/19

Intro. Electricity, Ohm's Law,
Circuits

Formal Lab Report \rightarrow T 5/20

Test \rightarrow W 5/21



Everything on Quiz + Electromagnetism and
Safety

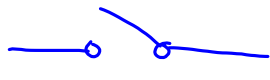

Circuits:

• Pathways:



- Electrons must have a path to travel
- Closed circuit → complete path for electrons to move (voltage or current source, wires, output)
- Open circuit → no complete path for electrons to move.
- We use switches to open and close circuits

• Circuit Diagrams:

- Electric supply 
 (DC source: Battery) 

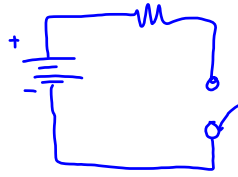
- Switch  open
  closed

- Resistor 

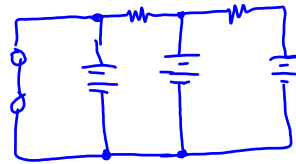
- Light Bulb 
 

- Some Piece 

- One Resistor, One Battery, One switch

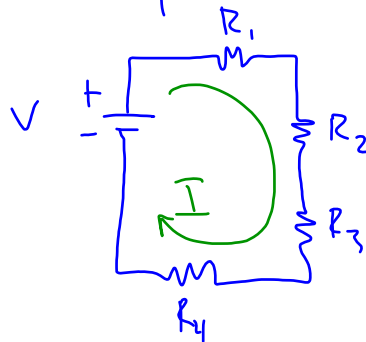


- 2 Resistors, 3 batteries, 1 switch



- Series Circuits:

- Only one path for current to travel
- Current is the same in all parts of this circuit
- Example:



- If we remove one part from the circuit, current flow stops
- Total resistance: Add up all the resistors